

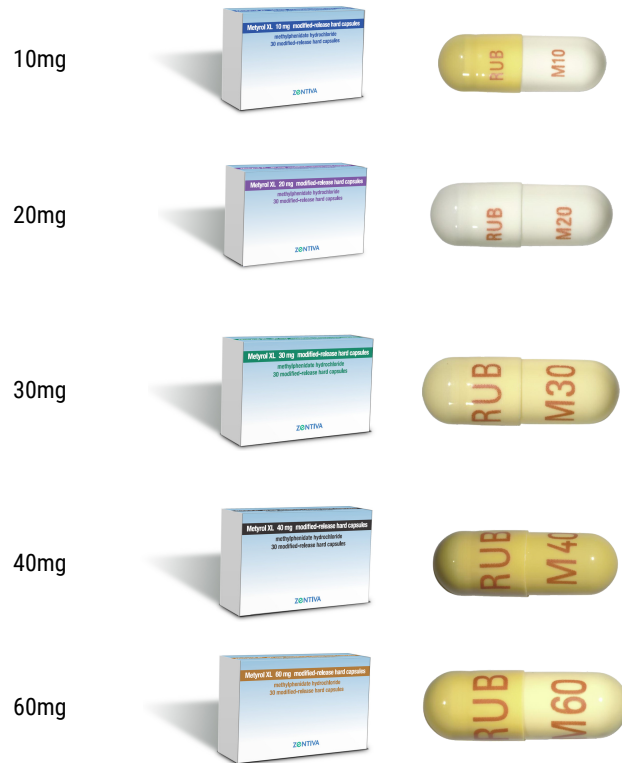


Metyrol XL[®] (methylphenidate hydrochloride) modified-release hard capsules

Information for patients who have been prescribed Metyrol XL[®]

Metyrol XL[®] is available in five strengths

Your doctor will decide which strength to prescribe for you. See below for details of available strengths, and pictures of the packs



Packs and capsules shown are not to size or scale - for illustrative purposes only

How to take Metyrol XL[®]

This is a summary, please read the Patient Leaflet inside your pack for full instructions.



When to take Metyrol XL[®]

- Take Metyrol XL[®] once daily in the morning.
- Metyrol XL[®] should not be taken too late in the morning as it may cause disturbances in sleep
- The capsule can be taken with or without food.
- The capsule should be swallowed whole, with a glass of water.
- Do not crush, chew or divide the capsule or its contents.



Use in children aged 6 years or over

- The recommended starting dose is 20 mg once daily. At the discretion of the doctor, treatment with Metyrol XL[®] can also be started at a dose of 10 mg. The maximum daily dose is 60 mg once daily. Metyrol XL[®] is taken once daily in the morning in patients younger than 18 years of age.



Use in Adults

- If you take Metyrol XL[®] for the first time, your doctor will start your treatment at a dose of 20 mg once daily and, if required, will increase the dose gradually at weekly small increments.
- If you were already treated with a modified-release formulation of methylphenidate during childhood and you have recently turned 18 years of age, your doctor may continue treatment with the same dose.

If you forget to take Metyrol XL[®]

Do not take a double dose to make up for a forgotten dose. Wait until it is time for the next dose.

What is Metyrol XL[®]

Metyrol XL[®] is indicated as part of a comprehensive treatment program for Attention Deficit Hyperactivity Disorder (ADHD) in children aged 6 years of age and over and adults when remedial measures alone prove insufficient. It can help you complete daily tasks by improving patients attention and concentration levels, while reducing impulsive behavior. Please refer to patient information leaflet inside your pack for full details.

Common Side Effects

Like all medicines, this medicine can cause side effects, although not everybody gets them and the majority of patients find that Metyrol XL[®] helps them manage their ADHD. Your doctor will talk to you about these side effects.

Why has my prescription changed to Metyrol XL[®]

Metyrol XL[®] is a brand of methylphenidate hydrochloride modified release capsules. It contains the same medication and treats the same medical conditions as Ritalin XL[®] and other brands of methylphenidate hydrochloride modified release capsules.

Please read the Patient Leaflet inside your pack before you start using this medicine. If you have any further questions, please ask your doctor, pharmacist or nurse.

Reporting of side effects

If you get any side effects, talk to your doctor, pharmacist or nurse. This includes any possible side effects not listed in the package leaflet. You can also report side effects directly via the

Yellow Card Scheme at: <https://yellowcard.mhra.gov.uk/> By reporting side effects, you can help provide more information on the safety of this medicine

Adverse events should also be reported to Zentiva via email to PV-United-Kingdom@zentiva.com or via phone on **0800 090 2408**.

